

## PLACEMENT

After the recital, our teachers will make their evaluations of the students. You will receive your child's placement and registration form in the mail during the summer for the upcoming dance season. Please remember that proper placement is crucial for your child's progress.

## CLASS ATTIRE

All classes require a black leotard. Students may wear tight dance shorts for all classes, except ballet. Tights and footwear are listed below and can be found on our website. Competition classes will receive separate information regarding their shoe and tights styles. All style numbers listed below can be found at [arenadancenj.com](http://arenadancenj.com) or [discountdance.com](http://discountdance.com)

## BALLET CLASSES

### NO SHORTS PERMITTED!

Ballet Shoes: Capezio Hanami Canvas Split Sole #2037 Color Light Pink  
Pink Tights: Bodywrappers TotalStretch Convertible Tights – "Ballet Pink" Adult Size #A81 Child Size #C31. Hair must be in a clean bun to take class. Creative Movement classes may wear skirts.

## TEEN TAP

Black Bloch "Respect" Tap Shoe #S0361L

## ALL OTHER TAP CLASSES

Tan Bloch "Tap On" Buckle Shoe #S0302G  
Light Suntan Tights – Capezio #1916. Hair must be pulled up in a ponytail or bun.

## JAZZ

Tan Bloch Slip on Elasta Bootie #S0499L  
Light Suntan Tights – Capezio #1916. Hair must be pulled up in a ponytail or bun.

## LYRICAL & CONTEMPORARY

Capezio Canvas Hanami Pirouette Shoes #H064W. Light Suntan Stirrup Tights – Capezio #1961. Hair must be in a clean bun to take class.

## MODERN/FLIPS & TRICKS

Barefoot (no shoes required). Light Suntan Stirrup Tights – Capezio #1961. Hair must be pulled up in a ponytail or bun.

## HIP-HOP

Black tanks or t-shirts are permitted along with ALL BLACK capris, leggings, dance pants or sweatpants NO SHORTS. Hair must be pulled up in a ponytail. Any brand all black sneaker is permitted for class. Students cannot wear these shoes outside. They must be for dance class only! Performance shoe styles will be determined by the teacher.

## CREATIVE MOVEMENT

This is a tap and ballet combo class that introduces our younger dancers to the basics of a dance class with movement and rhythm exercises.  
Taps: #S0282G Black Capezio "Jr Tyette"  
Ballet Shoes: Capezio Hanami Canvas Split Sole #2037 Color Light Pink  
Tights: Bodywrappers TotalStretch Convertible Tights #C31  
Hair must be in a clean bun to take class. Creative Movement classes may wear skirts.



CONTEMPRO DANCE  
THEATRE



CONTEMPRO DANCE  
THEATRE

## STUDIO INFORMATION

You will receive monthly emails throughout the year informing you of costumes, pictures, recital, tickets, summer classes, etc. If you have any concerns throughout the year, feel free to contact the office.

612-616 Lincoln Highway  
PO Box 448, Fairless Hills, PA 19030

[contemprodt@gmail.com](mailto:contemprodt@gmail.com)  
[contemprodancetheatre.com](http://contemprodancetheatre.com)  
(215) 945-8843

# WELCOME!

**Contempro Dance Theatre** (formerly known as Wendy's Dance Center) is currently owned and under the artistic direction of award winning teacher and choreographer, Jennifer Lentz (B.F.A. degree from Temple University '02). **Thank you for choosing our elite studio for your child's dance education!**

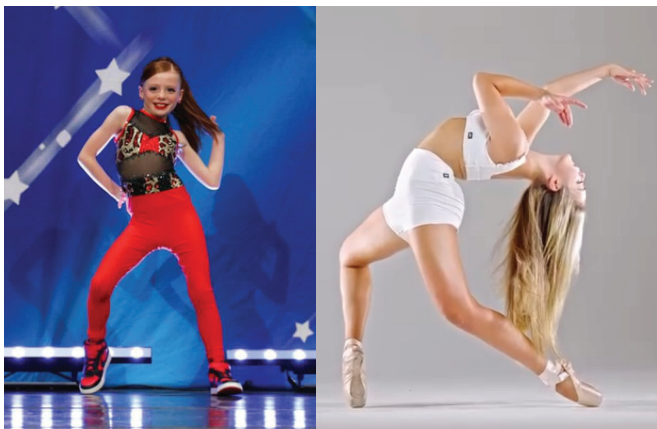
## THE CONTEMPRO MOTTO

At **Contempro Dance Theatre** we believe that the art of dance should be taught to children in a comfortable atmosphere. The student will be placed in the proper class level where they will make the greatest technical progress. Please respect the teacher's recommendation as your child's overall achievement depends on this.

## CLASSROOM ETIQUETTE

The rules of the classroom arise out of deep rooted traditions and are in place to ensure your child may get the full benefit of their dance instruction.

Please have students arrive on time and in proper class attire each week. Students who arrive late are disruptive to the entire class. Gum and food are not permitted in the studios. Street shoes may NOT be worn on the studio floors.



*Dance education empowers and defines self esteem, discipline, creativity and self-confidence. These principles will become a part of each student whether they pursue a professional career or not. These are valuable life lessons for every child!*

## TUITION AND FEES

Tuition is based on a nine month period, regardless of how many weeks in the month. You may make one yearly payment or nine monthly payments. Tuition is due by the 5th of each month. After the 5th, there will be a \$15 late fee. There will be a \$35 service charge for each returned check. There is a non-refundable one time processing fee of \$10 or a family fee of \$20 due at time of registration.

## TUITION RATES

HOURS A WEEK	COST PER MONTH
1.0 hour a week	\$75 per month
1.5 hours a week	\$115 per month
2.0 hours a week	\$135 per month
2.5 hours a week	\$155 per month
3.0 hours a week	\$175 per month
3.5 hours a week	\$185 per month
4.0 hours a week	\$215 per month
4.5 hours a week	\$225 per month
5.0 hours a week	\$235 per month
5.5 hours a week	\$245 per month
6.0 hours a week	\$255 per month
6.5 hours a week	\$265 per month
7.0 hours a week	\$275 per month
7.5 hours a week	\$285 per month
8.0 hours a week	\$295 per month
8.5 hours a week	\$305 per month
9.0 hours a week	\$315 per month
9.5 hours a week	\$325 per month
10.0 hours a week	\$335 per month
10.5 hours a week	\$345 per month
11.0 hours a week	\$355 per month

All tuition is capped at \$500 a month. There will be no refunds for any of these charges. Classes are subject to change or cancel at artistic director's discretion.

## COSTUMES

Costumes for recreational students are \$100 and \$130 for competition students. Price includes tights and a garment bag. Measurements are taken for sizing only. It is NOT a custom made costume and alterations may be necessary at the parent's expense. Competition costume payments are due by the date in your packet. Recreational costume payments are due by 11/1. Partial payments are always accepted with payment in full by November 1st. There are no refunds once the costumes have been ordered!

## ANNUAL RECITAL

We hope all of our students at **Contempro Dance Theatre** will participate in this wonderful event. If your child does not wish to participate, we must know by November 1st, prior to costumes being ordered. Ticket prices, t-shirt order forms and recital schedules will be distributed in the spring.

## STUDIO CLOSINGS

During inclement weather, please check your email. We will send out a notice regarding the studio's closing. Make up classes are permitted where applicable. Please reference the studio website for a comprehensive list of studio events and holiday closings.

